



***The Interior Sliding Door Company***

**PRODUCT CATALOGUE**

*Since our inception in 2005, Slide 'n Space has been dedicated to delivering the highest standard of product quality and customer service. From modern apartments and farm cottages to classic homes, our interior sliding doors redefine living spaces, ensuring they are not only beautiful but also highly functional.*



# BARN STYLE SLIDING DOORS



## Classic Barn Style Sliding Door

The Classic Barn Style Interior Sliding Door is a rustic yet modern door used for separating spaces within a home, office or commercial space. This door features a sleek sliding mechanism that glides effortlessly along a top-mounted track.

- Fits opening: 813mm x 2032mm
- Door size: 930mm x 2050mm

**Included:** The door, track set, two handles, bottom guide, two anti-jump pins, screws, wall plugs, and DIY instructions.



## Bi-Fold Barn Style Sliding Door

The Bi-Fold Interior Sliding Door combines modern style with functionality, making it ideal for bedrooms and bathrooms. Its central hinging mechanism allows the panels to fold neatly and efficiently, reducing the need for extra wall space for the track and sliding door.

- Fits opening: 813mm x 2032mm
- Door size: 950mm x 2050mm

**Included:** The door, track set, handle, two anti-jump pins, screws, wall plugs, and DIY instructions.



## Dakota Barn Style Sliding Door

The Dakota Interior Sliding Door combines the rustic charm of barn doors with a clean, minimalist design. The door is made from durable white melamine material, which is resistant to scratches and stains. It has black PVC edging and is equipped with black powder-coated aluminium hardware.

- Fits opening: 813mm x 2032mm
- Door size: 900mm x 2060mm

**Included:** The door, track set, two handles (1 x 300mm barn style handle and 1 x slim fit handle), bottom guide, two anti-jump pins, screws, wall plugs, and DIY instructions.

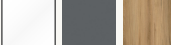


## Louisiana Barn Style Sliding Door

The Louisiana Interior Sliding Door is designed to elevate the entrances of bedrooms and bathrooms. With clean lines and understated styling, it complements contemporary home aesthetics while also providing the practicality of a sturdy, country-style sliding door.

- Fits opening: 813mm x 2032mm
- Door size: 900mm x 2050mm

**Included:** The door, track set, two handles (1 x 170mm classic barn style handle and 1 x slim fit handle), bottom guide, two anti-jump pins, screws, wall plugs, and DIY instructions.

**Standard finish options** 

# CONCEALED TRACK SLIDING DOORS



## Alpha Sliding Door

The Alpha Interior Sliding Door is a stylish and functional solution designed to save space in bedrooms and bathrooms. The door is double-sided and offers a range of finishes and frame colours, ensuring a polished look from both the inside and outside.

- Fits openings: 813mm x 2032mm
- Door size: 890mm x 2050mm

**Included:** The door, track set, fascia, bottom guide, privacy slide lock, screws, wall plugs, and DIY instructions.

### Standard finish options:

- Both sides white melamine panel
- One side white melamine panel, mirror finish on the other
- Both sides mirror finish, white melamine panel top and bottom
- Frosted glass with white melamine panel on top and bottom
- Both sides mahogany wood grain melamine panel
- One side mahogany melamine panel, mirror finish on the other

Standard frame colours



## Delta Sliding Door

The Delta Interior Sliding Door offers a modern and space-saving design for your living area, ideal for bedrooms and bathrooms. These doors are exclusively available in a melamine finish option.

- Fits openings: 813mm x 2032mm
- Door size: 930mm x 2050mm

**Included:** The door, track set, fascia, two handles, screws, wall plugs, and DIY instructions.

# EXPOSED TRACK SLIDING DOORS

## Arlo Sliding Door

The Arlo Interior Sliding Door is a sleek and modern door that adds style and functionality to any contemporary setting, particularly in bedrooms and bathrooms.

- Fits opening: 813mm x 2032mm
- Door size: 890mm x 2060mm

**Included:** The door, track set, handle, bottom guide, screws, wall plugs, and DIY instructions.



## Chalkboard Sliding Door

The Chalkboard Interior Sliding Door is a creative and practical addition to any room, this door seamlessly blends into bedrooms and bathrooms. The chalkboard surface is perfect for making notes, jotting down daily tasks, or allowing kids to express their imagination.

- Fits opening: 813mm x 2032mm
- Door size: 910mm x 2050mm

**Included:** The door, track set, fascia, two handles, screws, wall plugs, and DIY instructions.



## Simplicity Sliding Door

The Simplicity Interior Sliding Door is a DIY solution designed to enhance the functionality and aesthetics of any home or office interior. This door is made from durable white powder-coated aluminium with matte silver aluminium handles, this door promises both durability and contemporary elegance.

- Fits opening: 813mm x 2032mm
- Door size: 900mm x 2060mm

**Included:** The door, track set, two handles, screws, wall plugs, and DIY instructions.



## Space Fold Sliding Door

The Space Fold Interior Sliding Door is a modern, space-saving solution designed for contemporary living spaces. It offers a sleek, minimalist design with exceptional functionality for bedrooms, bathrooms, and inter-leading spaces. This door provides a smooth transition and efficiently folds in an accordion-like fashion, optimising space without compromising on style or practicality.

- Fits opening: 813mm x 2032mm
- Door size: 950mm x 2050mm

**Included:** The door, track set, handle, screws, wall plugs, and DIY instructions.



# CUSTOM INTERIOR SLIDING DOORS

We specialise in creating custom sliding doors for your home, tailored to your personal style and spatial needs. Don't let standard sizes limit your creativity.

Your home should reflect your individuality, and with Slide 'n Space, you can ensure that every detail aligns with your expectations. Our custom build options cater to those seeking to break free from the standard sizes and designs available off the shelf.



## INSTALLATIONS



We focus on providing interior sliding doors and wardrobes that are tailored to meet the unique needs and characteristics of each individual home and space.

All of our doors are designed to be DIY friendly, but if you don't have the tools or the time we offer professional installation services in and around Gauteng.

Our team of professional installers are able to install your new wardrobe or convert your current interior doors to sliding doors.

## Our Installation Process



### Consultation

We'll discuss your needs, preferences, and the specifics of your space to come up with the best sliding door solution for you.



### Design

Based on our consultation, we will design a custom sliding door or wardrobe that not only fits your space perfectly but also matches your personal style and the overall design of your home.



### Manufacturing

Your doors are then crafted using only the highest quality materials, ensuring durability, aesthetics, and the perfect fit.



### Installation

Our skilled installers take over to ensure that your new sliding doors are installed flawlessly, with minimal disruption to your life and maximum attention to detail.

# WARDROBE SLIDING DOORS

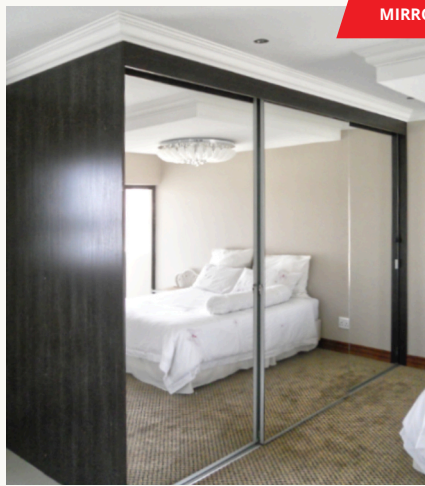


Our Standard doors feature a robust roller-and-track mechanism for smooth, effortless opening and closing as well as slim, low-profile aluminium frames. All our glass and mirror products are fitted with a safety film.

Our standard Sliding Wardrobe doors are available from any one of our major retail partners throughout South Africa. The doors are supplied one (1) per box.



MELAMINE

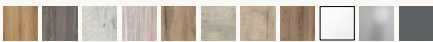


MIRROR



ASPREY COTE

We have a wide range of melamine door colours to choose from. Our melamine doors also come in a choice of framed or frameless finish. Our frame colour options are natural anodised (silver), as well as white or bronze powder coated.



Mirror doors pick up and enhance the existing colour scheme in your room. We offer either a framed mirror or a frameless mirror door. Our frame colour options are either natural anodised (silver), white or bronze powder coated. You also have the option to add a lock to your wardrobe doors.

A colour coated safety glass available in a wide range of colours and combinations. Select any paint colour and we will manufacture your doors accordingly. A combination of asprey cote, mirror and melamine is available on request.

## How to Calculate Your Wardrobe Size

Here is a visual guide to calculate the size and number of doors required to convert your existing wardrobe to sliding doors:



For a wardrobe  
1200 – 1240 wide

Use **TWO 640mm doors**



For a wardrobe  
1800 – 1840 wide

Use **THREE 640mm doors**



For a wardrobe  
2380 – 2440 wide

Use **FOUR 640mm doors**

For a wardrobe  
1780 – 1820 wide

Use **TWO 930mm doors**

For a wardrobe  
2660 – 2710 wide

Use **THREE 930mm doors**

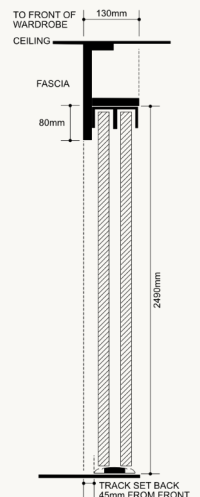
For a wardrobe  
3500 – 3600 wide

Use **FOUR 930mm doors**

## Fitting Instructions:

- Minimum ceiling height of 2530mm
- Standard doors are available in two sizes, 640mm or 930mm, both come at a standard height of 2450mm
- Bottom track sets supplied separately from the doors and are available in two lengths, either 1840mm or 2800mm

**Included:** Doors (including wheels and guides), woodwork, tracks and hardware.



# ACCESSORIES

Additional components that can enhance the functionality, aesthetics, and performance of our interior sliding doors.



## Alpha Sliding Door Fascia

**Included:** The fascia (pelmet), fascia ends, screws, wall plugs and DIY instructions.

**Fascia size:** 1820mm including two fascia ends

## Alpha Sliding Door Track Set

**Included:** The track, lockpin, two wheels, bottom guide, screws, wall plugs, and DIY instructions.

**Track size:** 1780mm

**Please note:** Product does NOT include a sliding door.



## Barn Style Sliding Door Track Set

**Standard finish options:** Black and white.

**Included:** The track (1.9m), two wheels and plates, two end stops, bottom guide, one barn style handle, one slimfit handle, screws, wall plugs, and DIY instructions.

**Also available without handles**

## Barn Style Sliding Door Wheels and Plates

**Included:** Two barn style door wheels and plates.



## Bi-Fold Barn Style Sliding Door Track Set

**Standard finish options:** Black and white.

**Included:** The track (1.1m), two wheels and plates, one pivot plate and pin, one handle, three hinges, screws, wall plugs, and DIY instructions.



## Simplicity Sliding Door Track Set

**Included:** The track, two wheels, bottom guide, screws, wall plugs, and DIY instructions.

**Please note:** Product does NOT include a sliding door.



## Otis Handles

**Available size options:**

- 170mm and 300mm
- Can be used either vertically or horizontally.
- 300mm Otis handle can also be used as a towel rail.



## Barn Style Handles

**Standard finish options:** Black and white.

**Available size options:**

- 170mm
- 300mm
- 400mm
- 500mm



*The Interior Sliding Door Company*

**For General Enquiries, Customer Support, Custom  
Interior Sliding Doors, Wardrobes and Installations**

**Margi Rau-Bean  
Internal Sales Support**

**Phone:** +27 (11) 493 0345  
**Mobile:** +27 67 596 9965  
**Email:** support@slidenspace.co.za

**For Sales Enquiries**

**Dean Halcrow  
Commercial Manager**

**Phone:** +27 (11) 493 0345  
**Mobile:** +27 82 491 3287  
**Email:** dean@slidenspace.co.za



**[www.slidenspace.co.za](http://www.slidenspace.co.za)**

VER. 6 (7 JANUARY 2025)